

MiSTEM & CTE

How Do MiSTEM and CTE Complement Each Other?

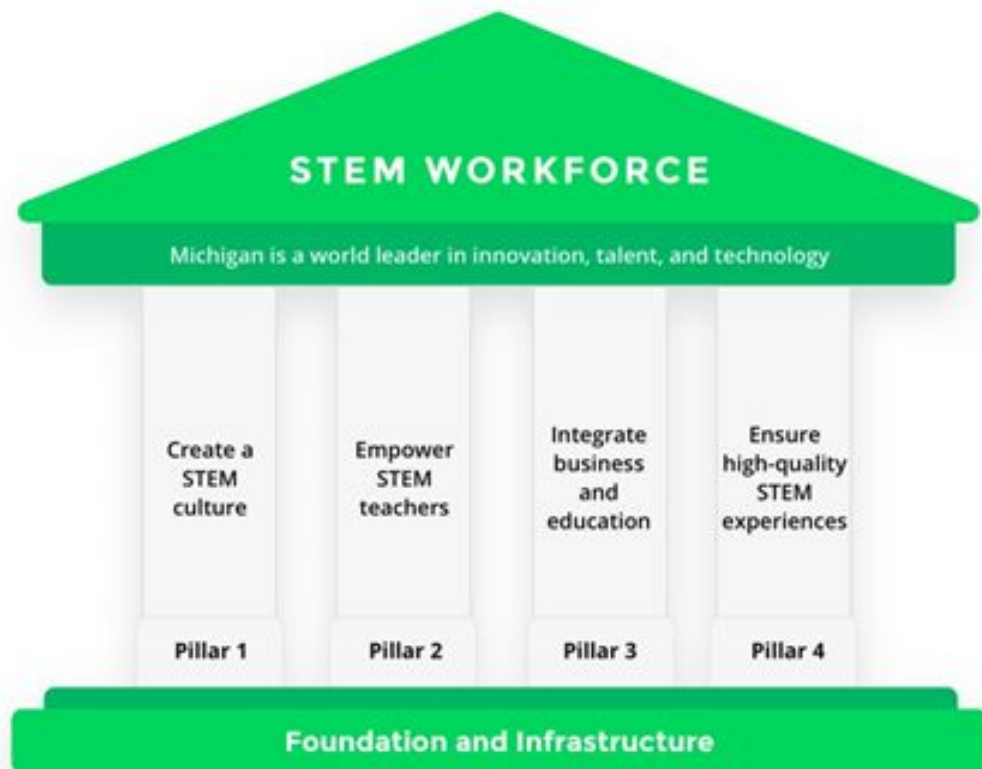
Megan Schrauben, Executive Director, MiSTEM Network

Diana Allard, Regional Director I69 Region, MiSTEM Network

Jason Luke, Regional Director, Southwest Region, MiSTEM Network

Outcomes:

- Learn about the MiSTEM Network
- Understand STEM career shortage
- Learn about existing CTE/STEM programming
- Gain ideas to take back to your district to support your STEM/CTE programming



MiSTEM Network Regions

Grant and Collaboration Opportunities:

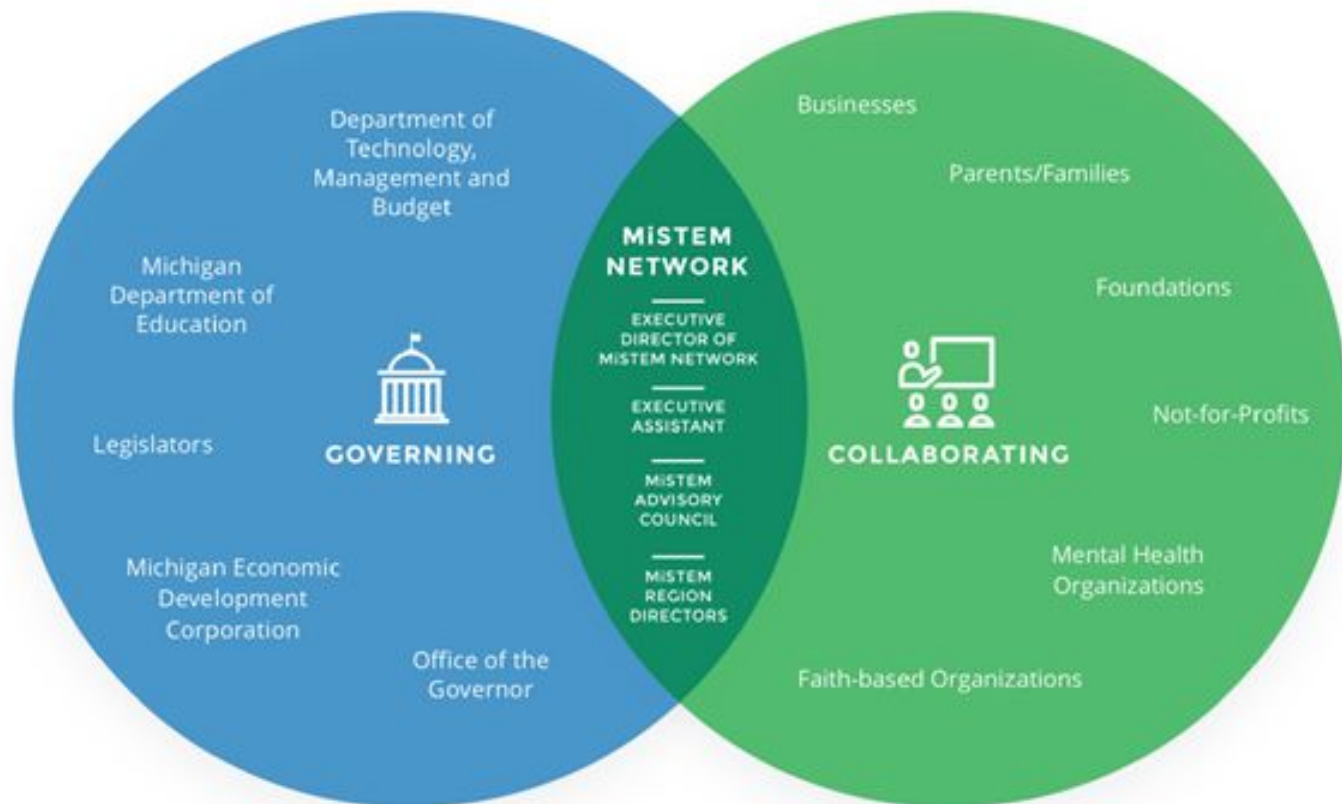
Operational Strategic Plans / grants submitted Oct. 1, 2018

Section 99s6 funds—PD for assisting districts in implementing the MMC

Council grants—at least one in each region, LEAs are eligible, STEMworks



MiSTEM Network Structure

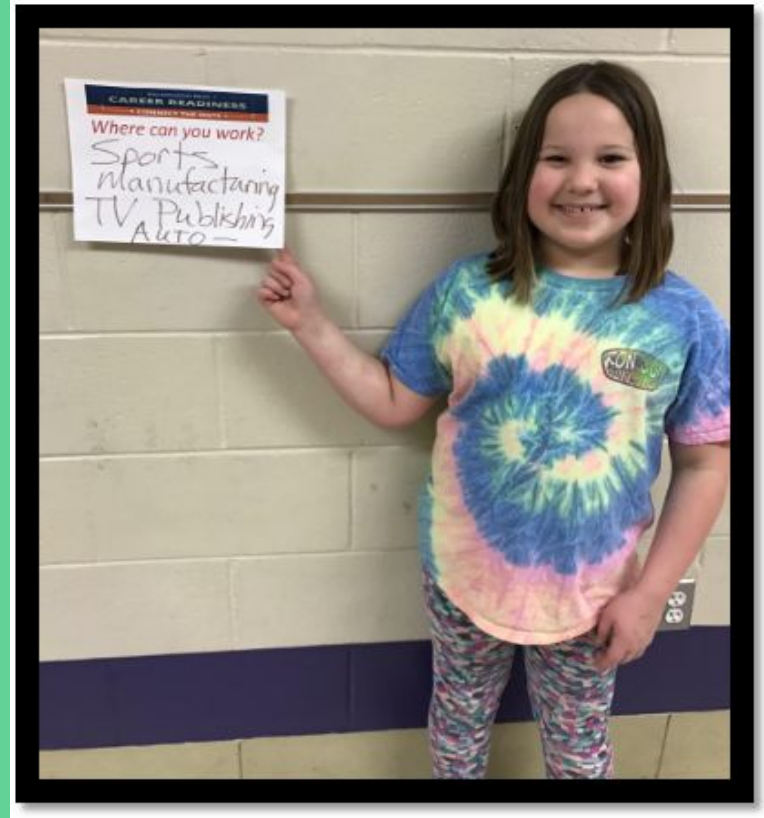


*All potential partners may not be represented

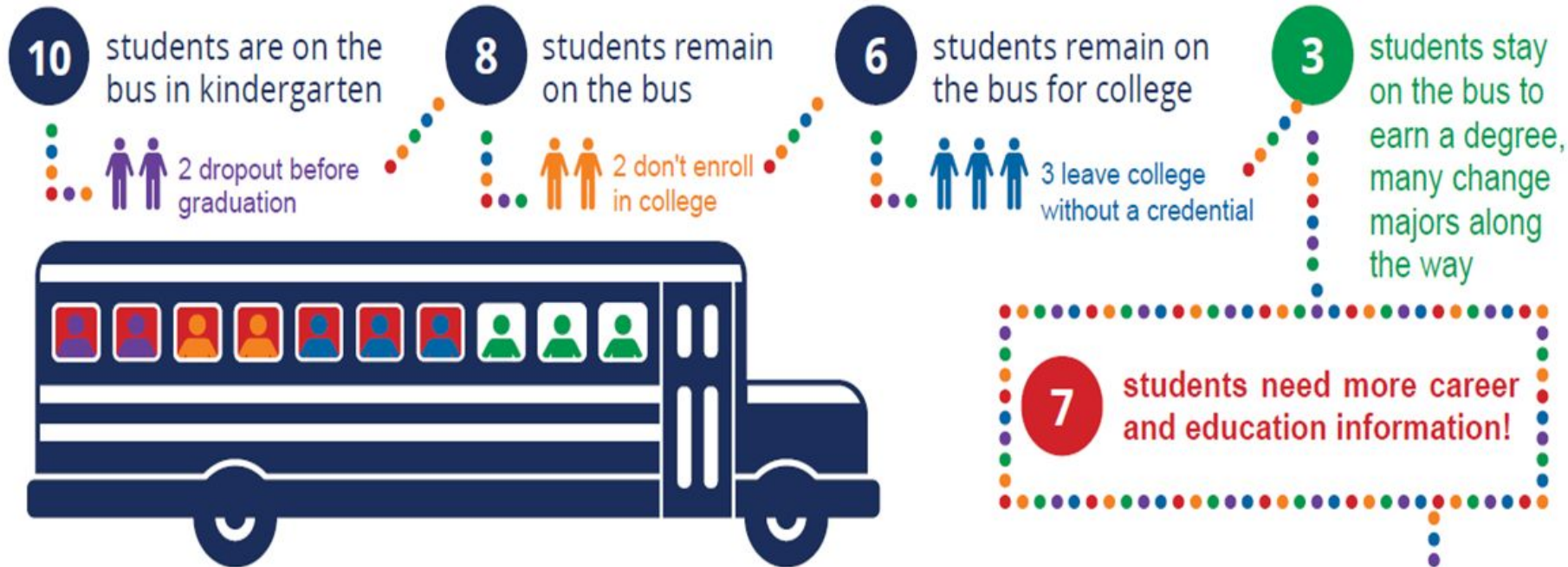
Why is STEM important?

~ Student Engagement

~ STEM Opportunities



Students must know what they CAN be before they must choose a career!



Let us help you change this statistic to ensure all students are successful!

STEM Opportunities

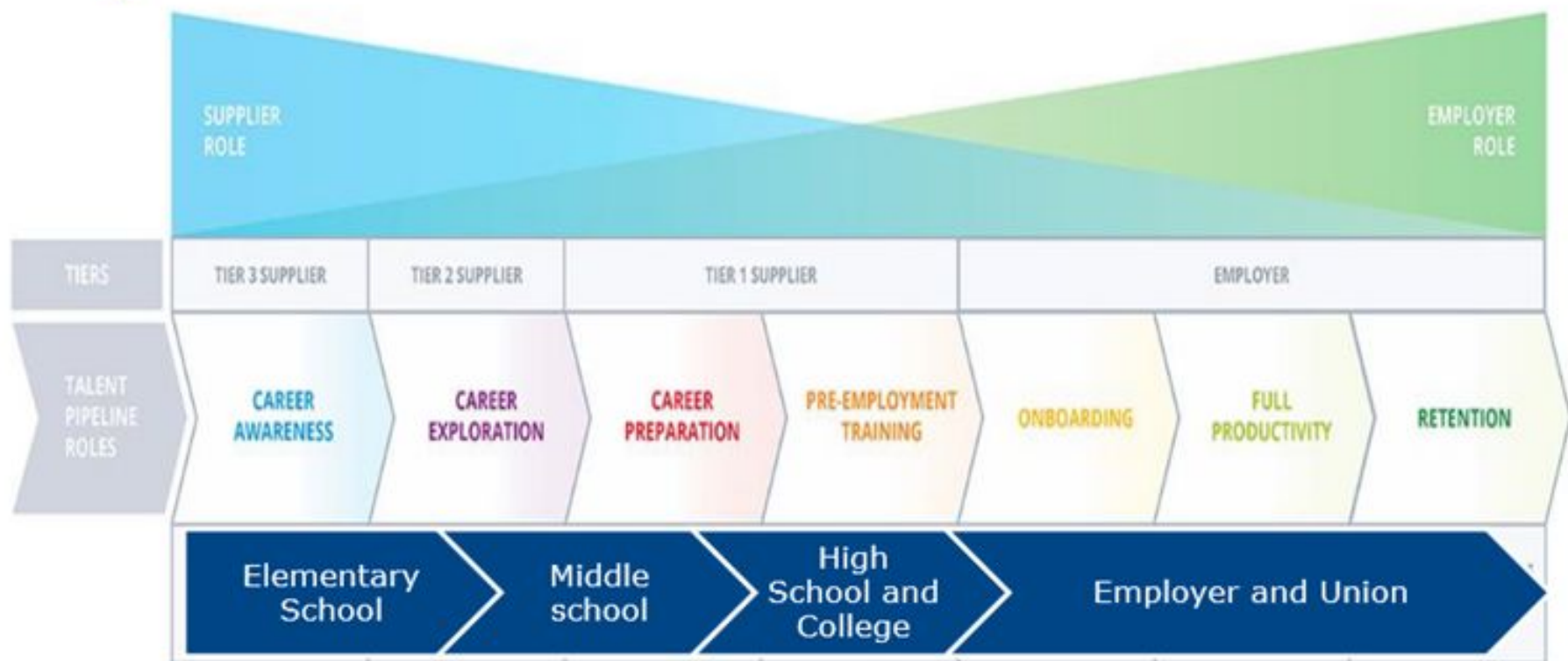
Kalamazoo County Student Careers of Interest:
From Career Cruising 2015-16



- 'Professional Athlete' is not included, however, 1,150 students selected this career.
- Career Development Stages by age: 0-11 Fantasy, 11-17 Tentative & 17-20's Realistic
- Top 10 MI Jobs in 2018, 5 are STEM related (Engineering, Health, IT) (Stryker, Borgess, Pfizer)



Talent Pipeline Management Crosswalk



High Quality STEM Programs

- Rich content
- Critical thinking skills
- Problem solving skills
- Real world application
- Scientific thinking
- Inquiry rich



Existing CTE and STEM Connections

- Geometry in Construction
- AMPED
- PBL Trainings
- Educators Externships
- MiCareerQuest/Career Fairs
- Agricultural/Natural Science Programs
- Computer Science/IT Programs
- Maker Faires
- Post-Secondary Partnerships



Existing CTE and STEM Connections Continued

- Health Science
- Engineering
- Manufacturing
- CTE Early Middle College
- Summer Camps
- OST Partnerships

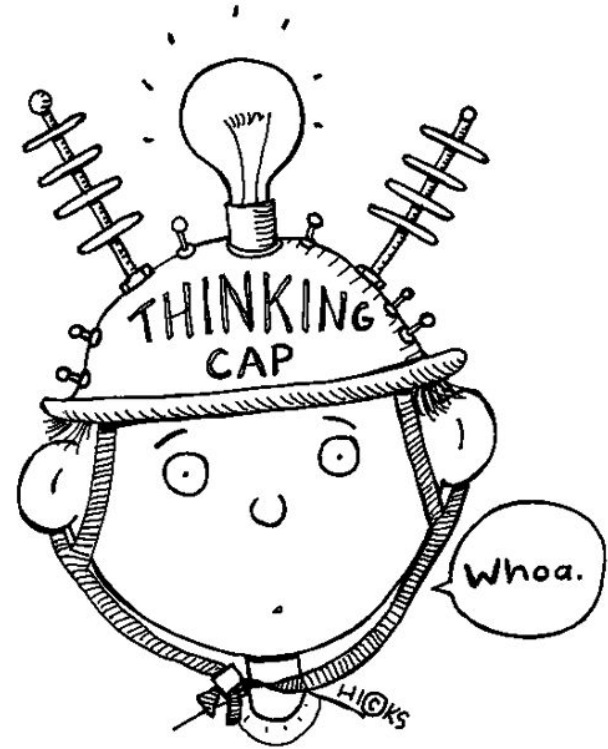


Think/Pair/Share

Action:

How do you see CTE and MiSTEM partnering?

What steps can you take to make this happen?



Next Steps

What questions do you have?

What support do you need to share what you have learned today?

MiSTEM & CTE

How Do MiSTEM and CTE Complement Each Other?

Megan Schrauben, Executive Director, MiSTEM Network

Diana Allard, Regional Director I69 Region, MiSTEM Network

Jason Luke, Regional Director, Southwest Region, MiSTEM Network