

INCORPORATING COLLEGE PATHWAYS

in your CTE program

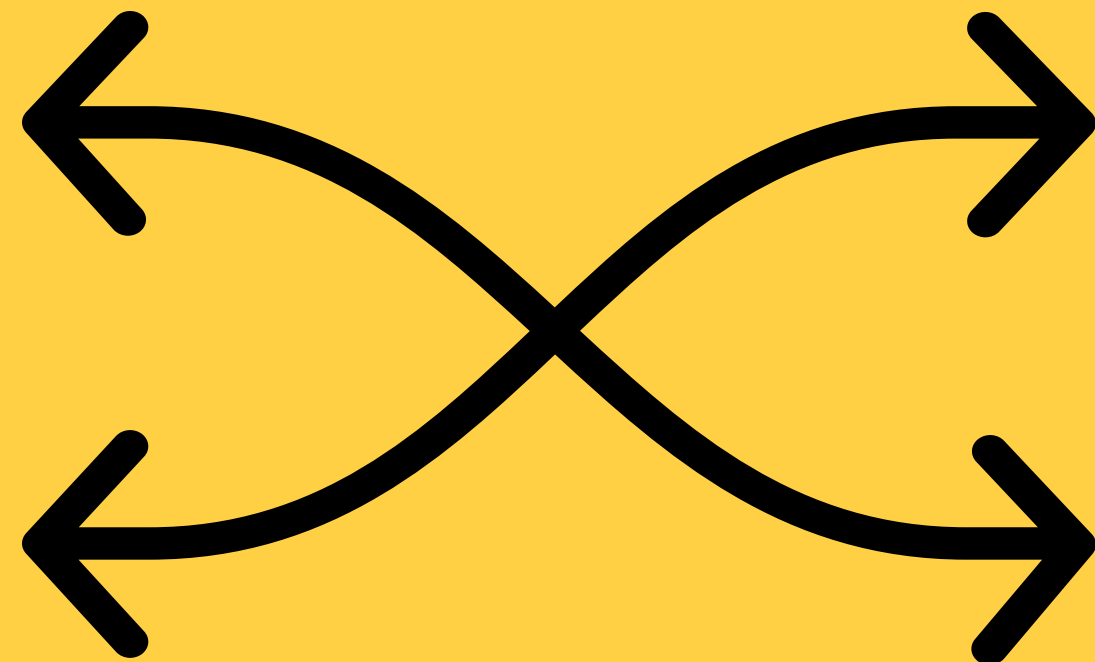
2019 Michigan Career and Technical Education Conference

Dr. DeeDee Stakley, Director, Ferris State University's Office of Transfer and Secondary School Partnerships

Leah Melichar, FerrisNow Outreach Coordinator

What is a college pathway?

- Link between high school and college
- Boundary-spanning curricula
- Instructional and organizational strategies
- Meaningful assessment



Overview of Pathways

- Advanced Placement/International Baccalaureate
- Bridge programs
- College-level examination program
- Concurrent enrollment
- Distance/virtual learning
- Dual enrollment
- Early/middle college



Our Pathway Focus Today

- Bridge programs
- College tech prep
- Concurrent enrollment
- Distance/virtual learning
- Dual enrollment
- Early/middle college high schools



Importance of Pathways



College access



Focus on bridging
K-12 and higher
education structures



Integrated support

Importance of Pathways



College success skills



Academic rigor

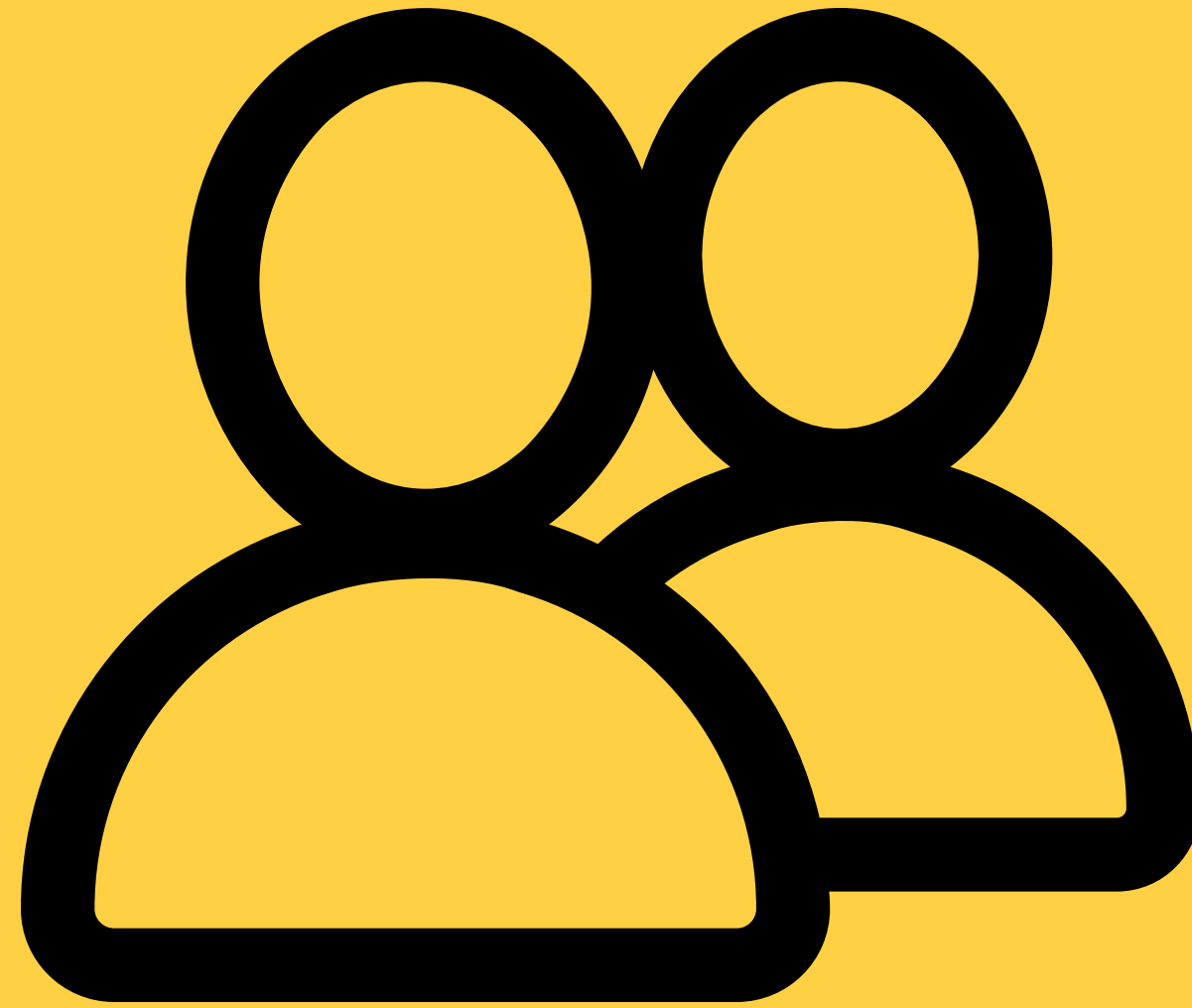


Enhanced college admissions profile

Bridge Programs



Support college
preparation



Target specific groups

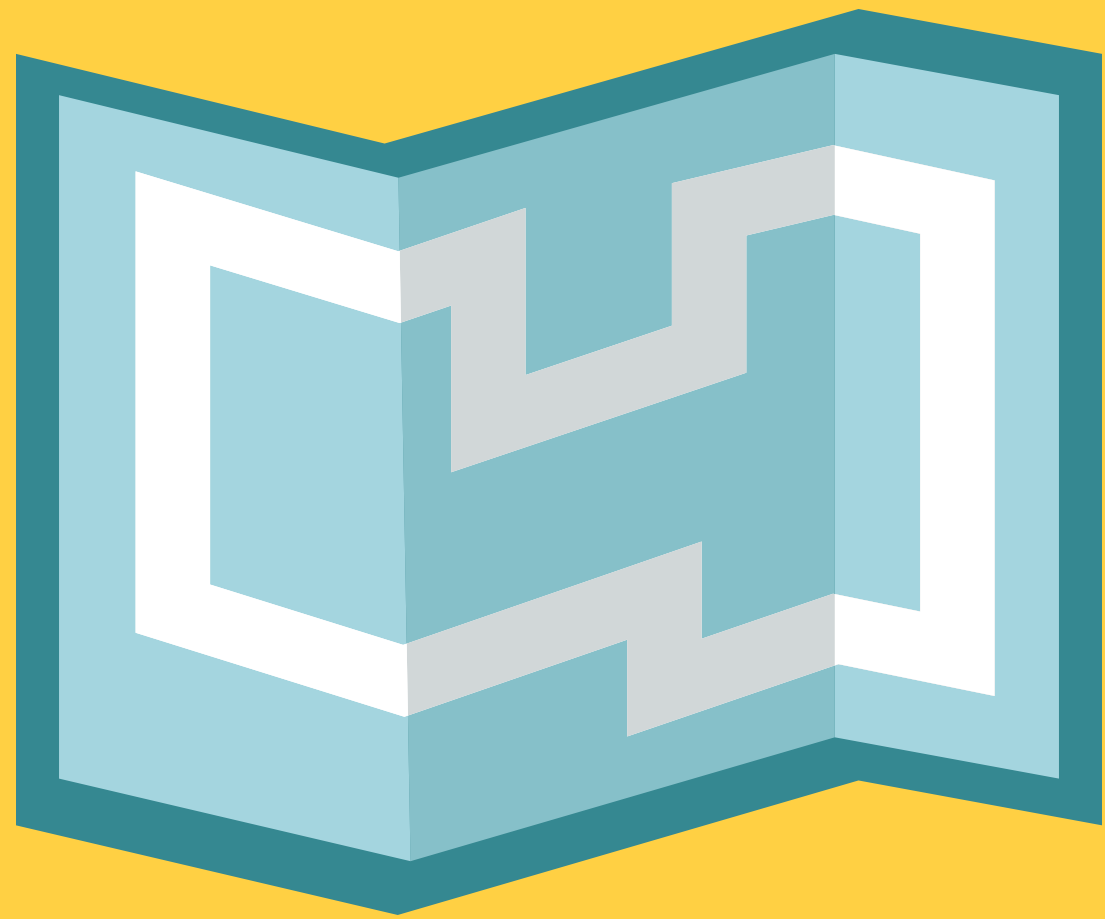


High school juniors
and seniors



College becomes
acheiveable

College Tech Prep



Planned sequence of
study



Technical fields of
study



Outcomes include:
Associate's degree
Certificate
Technical Preparation
Competence in math,
science, and
communication
Employment

Concurrent Enrollment



Taught by high school/career tech center instructors who meet college qualifications



Students earn transcribed college credit



Courses mirror those taught on the partner university campus



Courses are offered at the high school/career tech center during the school day

Dual Enrollment



Taught by
college/university
faculty



Students earn
transcripted college
credit



Courses offered at the
college or at the high
school/career tech
center

Distance Learning/Virtual



Taught by college/university faculty member or qualified high school instructor



Students earn transcribed college credit



Asynchronous or synchronous instruction

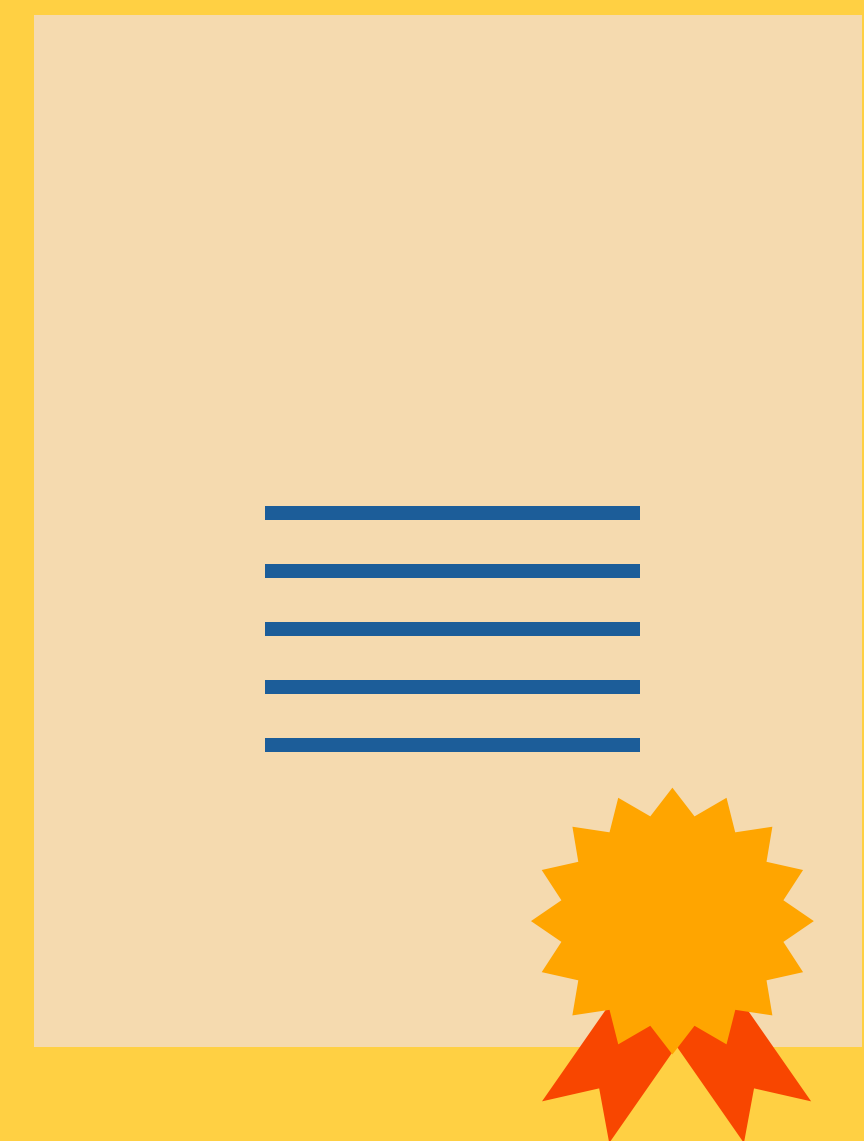
Early/Middle College High Schools



Blend high school and
college



General education or
discipline-specific
focus



Opportunity to earn
college credit
and/or credential(s)

Pathway Models: Wilson Talent Center



Partnerships with
colleges and
universities



Stand-alone
concurrent
enrollment courses



Capital Region
Technical Early
College

Pathway Models: Van Buren Middle College



Partnerships with colleges and universities

Kalamazoo Valley CC

Lake Michigan College

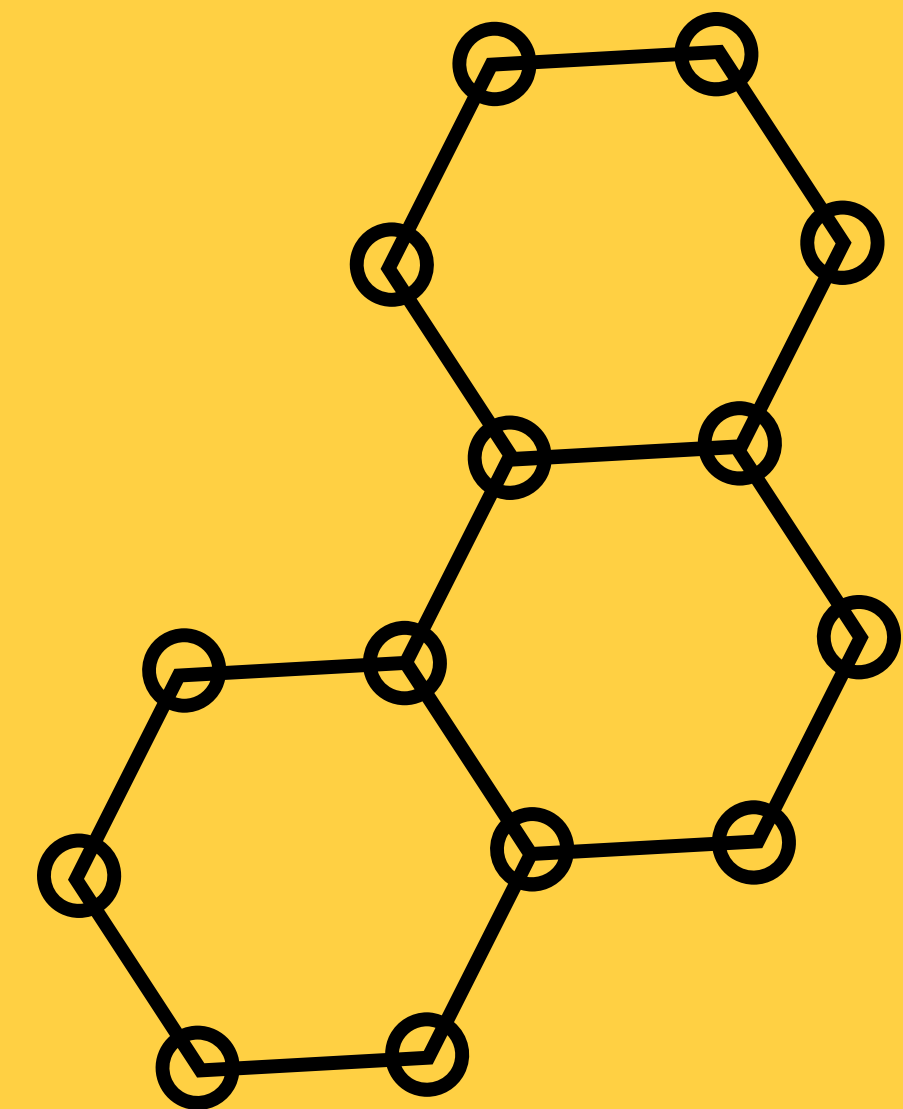
Southwest Michigan College



Multiple class formats

Dual enrollment on the college campus

Concurrent enrollment or dual enrollment on the Van Buren Tech Center campus



Program Structure

22 student cohort

13th year option

THANK YOU

Dr. DeeDee Stakley

Director

Office of Transfer and Secondary
School Partnerships

Ferris State University

deedeestakley@ferris.edu

Leah Melichar

FerrisNow Outreach Coordinator

Office of Transfer and Secondary
School Partnerships

Ferris State University

leahmelichar@ferris.edu



Office of Transfer and
Secondary School
Partnerships

SOURCES

Bragg, D. D., Barnett, E. A., & Kim, E. (2006). Academic pathways to and from the community college. *New Directions for Community Colleges*, (135), 5–107. doi.org/10.1002/cc.234

Karp, M. (2015). Dual enrollment, structural reform, and the completion agenda. *New Directions for Community Colleges*, 2015(169), 103–111. doi:10.1002/cc.20137